

# PORTFOLIO & PROGRAM ADVISORY

CREATING CERTAINTY IN CAPITAL PROJECT OUTCOMES



# ABOUT WT

At WT, we empower our clients to grow, inspiring confidence through our independent cost management and advisory services. Operating for 75 years, our expertise spans the building, construction, and infrastructure sectors.

We support our clients with an award-winning team of specialists in portfolio and program advisory, cost management and quantity surveying, commercial and financial advisory, carbon and sustainability, and asset and facilities management.



OPERATING  
SINCE 1949



INDEPENDENTLY  
OWNED & OPERATED



2,000+ STAFF  
GLOBALLY



400+ STAFF  
NATIONWIDE

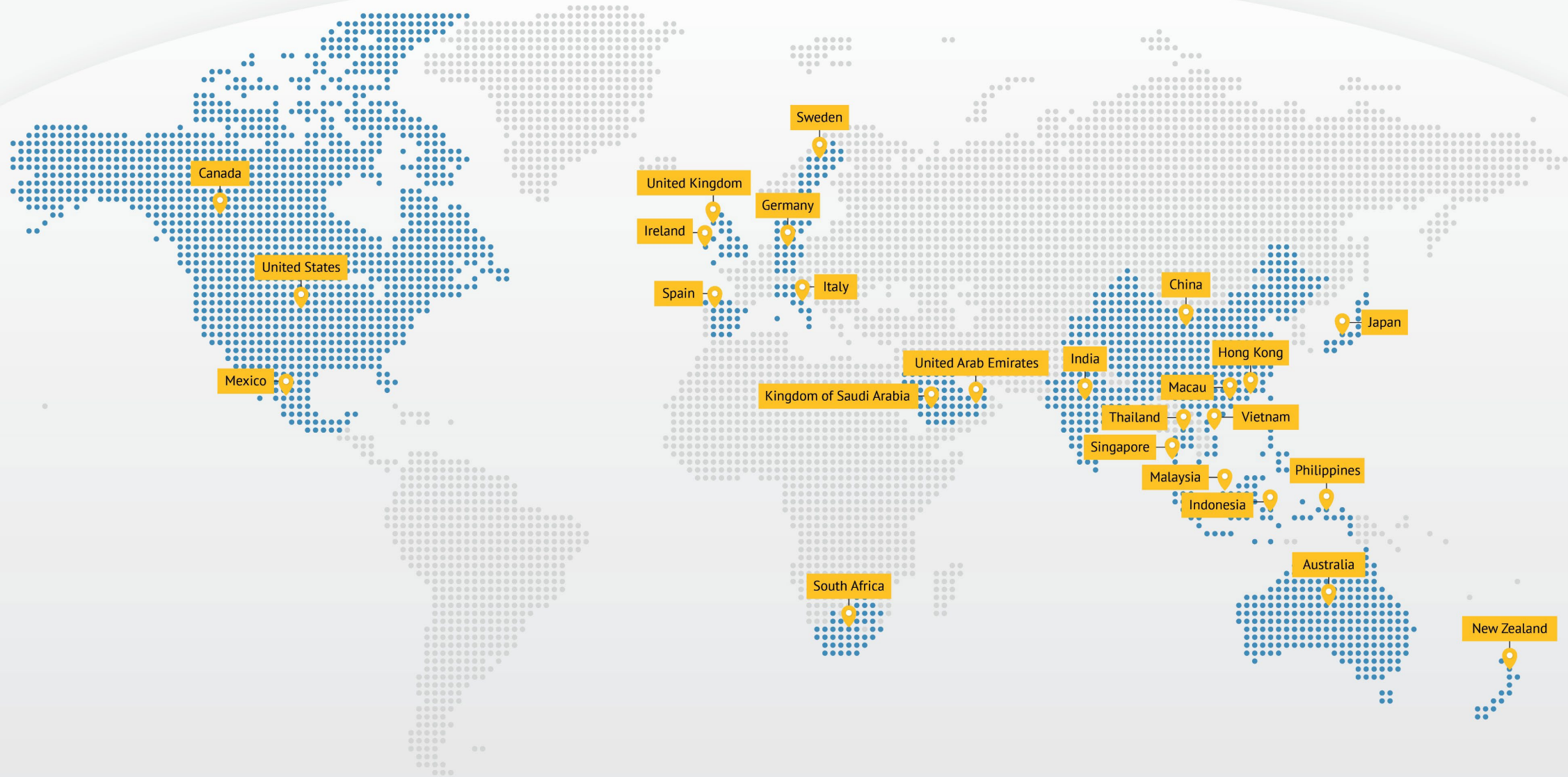


70+ OFFICES  
WORLDWIDE

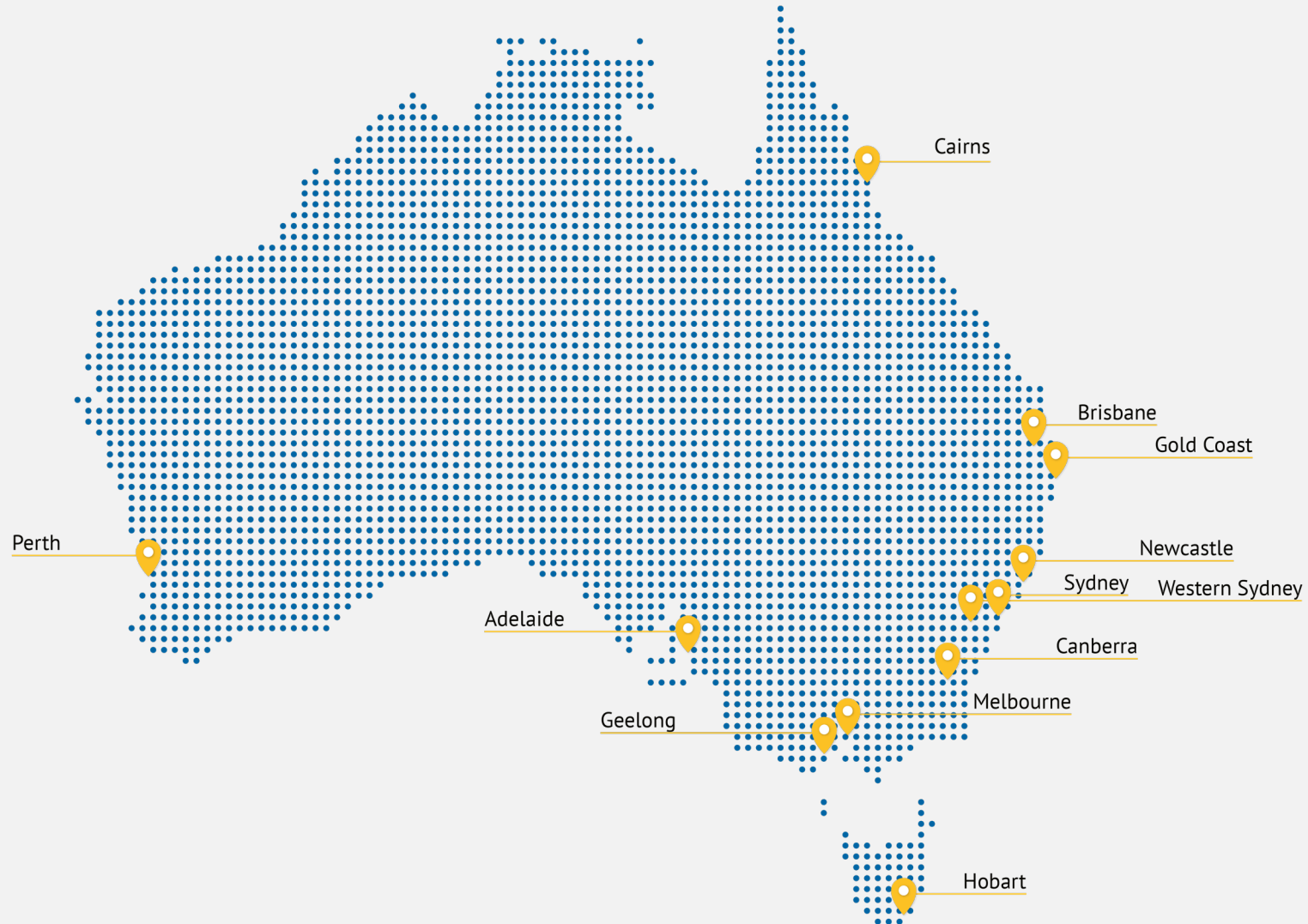


12 OFFICES  
NATIONWIDE

# OUR GLOBAL FOOTPRINT



# OUR NATIONAL FOOTPRINT



# OUR SERVICES ACROSS THE PROJECT LIFE CYCLE



# OUR SECTORS



**AGED CARE &  
RETIREMENT**



**AVIATION**



**COMMERCIAL &  
MIXED USE**



**DATA CENTRES**



**DEFENCE**



**EDUCATION**



**ENERGY**



**HEALTH**



**HOTELS, HOSPITALITY  
& LEISURE**



**INDUSTRIAL**



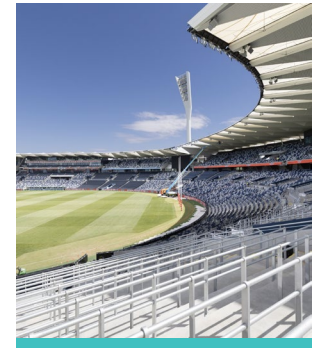
**INFRASTRUCTURE**



**RESIDENTIAL**



**RETAIL**



**SPORTS & STADIA**



# PORTFOLIO & PROGRAM ADVISORY SERVICES

# PORTFOLIO & PROGRAM ADVISORY

**REALISING BENEFITS IS WHY CAPITAL PROJECTS EXIST. FROM REAL ESTATE PORTFOLIOS TO INFRASTRUCTURE PROGRAMS AND CONSTRUCTION PROJECTS, WE BRING SAFE HANDS AND FRESH EYES TO GIVE OUR CLIENTS THE BEST CHANCE OF SUCCESS.**

We understand that our clients need to prioritise the portfolios, programs and projects that will deliver the greatest value and impact. They need effective controls, with accurate data at the right time and in the right format to enable good decisions.

Clarity, capability and consistency are at the core of our approach to improving program performance, maintaining project control, reducing cost and risk, and delivering reliable outcomes.

There's no one-size-fits-all solution to optimise performance and results – because every organisation is different. We develop bespoke approaches, tailored to our clients' needs, aspirations and budget.

# PORTFOLIO & PROGRAM ADVISORY



## CONTROLS AND INSIGHTS FOR CAPITAL PERFORMANCE

We create clarity in capital planning and maximise capital performance with strong project controls and data-driven insights.



## ESTABLISHING THE RIGHT APPROACH, ROLES AND CULTURE

We ensure the right capabilities and management functions are in place to deliver projects successfully.



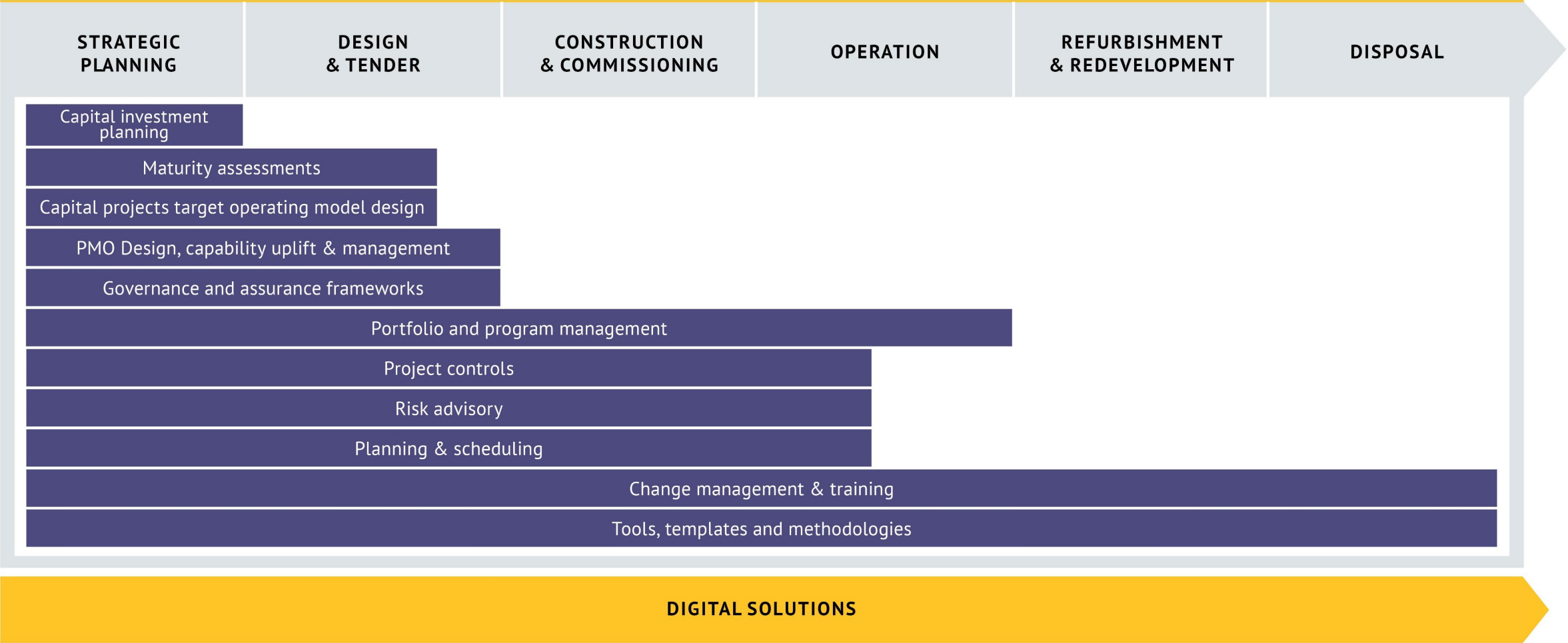
## CONSISTENT PROCESSES AND DEPENDABLE DECISION-MAKING

We establish consistent frameworks and streamline processes to ensure reliable outcomes, efficiency and accountability.

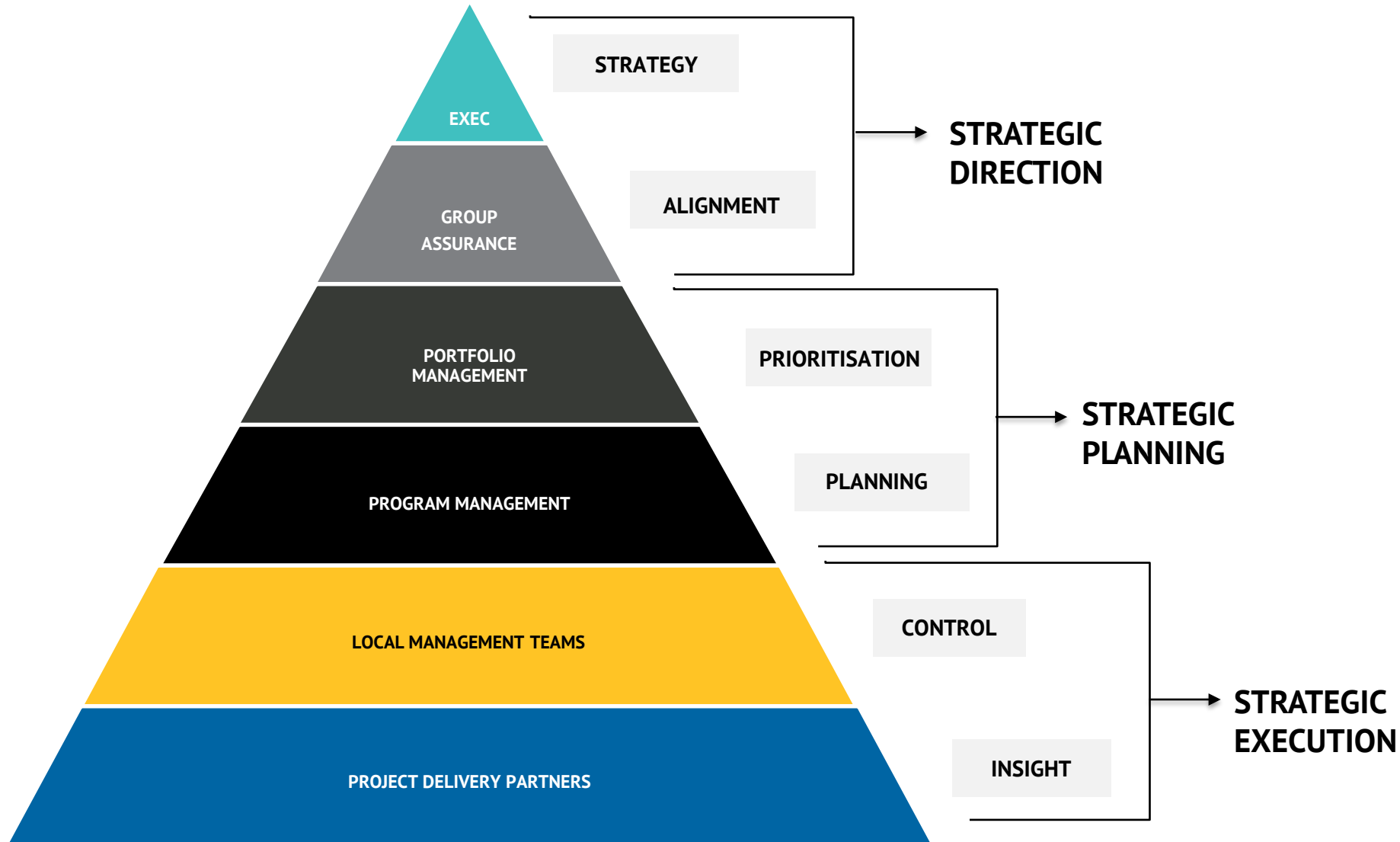
**WE'RE FOCUSED ON CREATING CERTAINTY IN CAPITAL PROJECT OUTCOMES THROUGH HANDS-ON EXPERTISE, PRACTICAL SOLUTIONS, QUALITY ADVICE AND ACTIONABLE INSIGHTS.**

With our deeply experienced specialists in optimising capital portfolios, managing infrastructure programs and controlling construction projects, we can help organisations get from where they are now to where they want to be.

# PORTFOLIO & PROGRAM ADVISORY SERVICES



# PORTFOLIO MANAGEMENT TARGET OPERATING MODEL



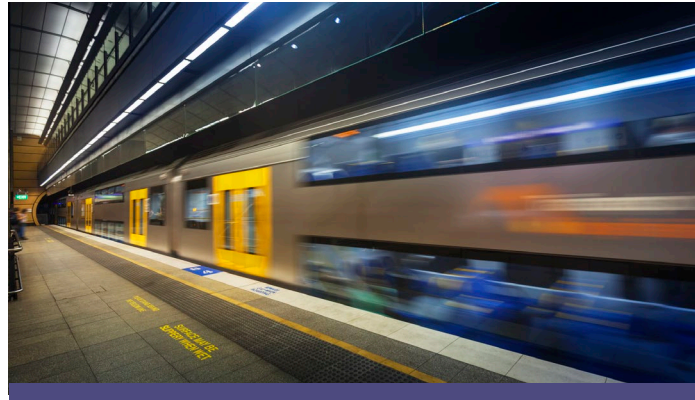


EXPERIENCE

# OUR EXPERIENCE



**CITADEL | GLOBAL**



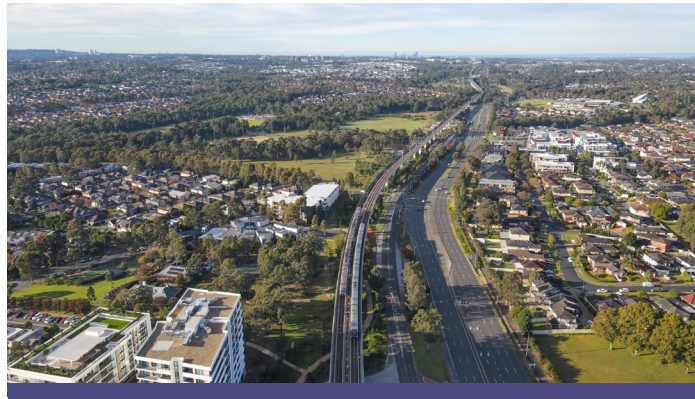
**SYDNEY METRO | NSW**



**CAIRNS AIRPORT | QLD**



**CROWN RESORTS LIMITED | VIC**



**BLACKTOWN CITY COUNCIL | NSW**



**MAURI FLOUR MILL | VIC**

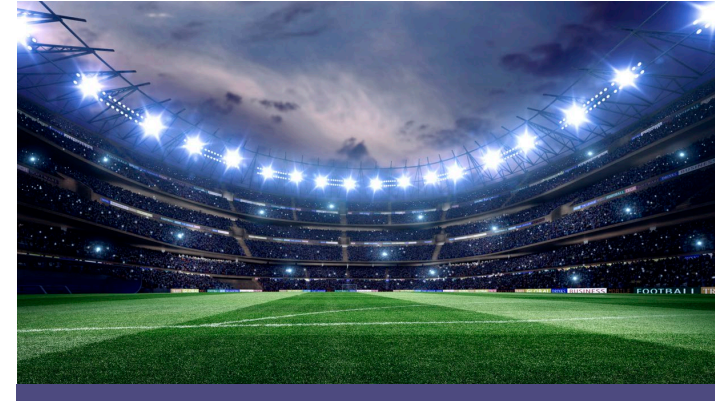
# OUR EXPERIENCE



**SUBURBAN RAIL LOOP | VIC**



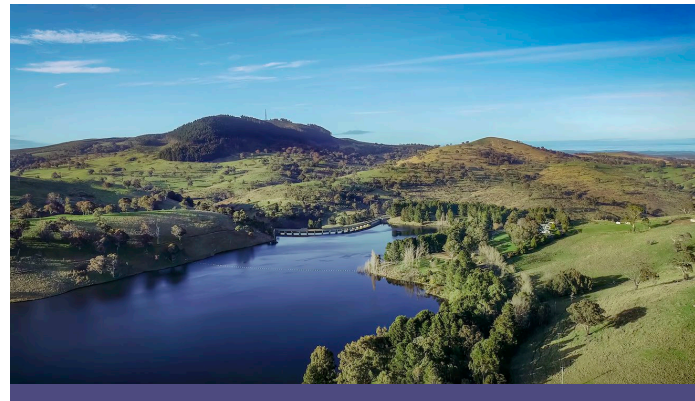
**UNITING CHURCH | VIC**



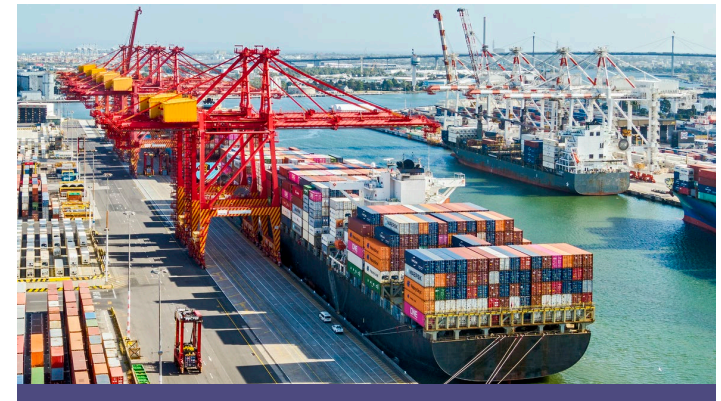
**MARVEL STADIUM | VIC**



**BRIDGEWATER BRIDGE | TAS**



**BARWON WATER REGIONAL RENEWABLE  
ORGANICS NETWORK | VIC**



**TASPORTS | TAS**

# CONTACTS

**ADAM ROBINSON**

Head of Portfolio & Program Advisory  
E: [arobinson@wtpartnership.com.au](mailto:arobinson@wtpartnership.com.au)

**JARED CATHCART**

QLD & WA State Lead  
E: [jcathcart@wtpartnership.com.au](mailto:jcathcart@wtpartnership.com.au)

**PETER COSMAN**

VIC & SA State Lead  
E: [pcosman@wtpartnership.com.au](mailto:pcosman@wtpartnership.com.au)

**DANNY LISTON**

NSW State Lead & Digital Services Lead  
E: [dliston@wtpartnership.com.au](mailto:dliston@wtpartnership.com.au)

**DAVID MACKINDER**

Planning Services Lead  
E: [dmackinder@wtpartnership.com.au](mailto:dmackinder@wtpartnership.com.au)

**RACHAEL MCCOOL**

Change Management Lead  
E: [rmccool@wtpartnership.com.au](mailto:rmccool@wtpartnership.com.au)

**LATHAM CONLEY**

Risk Management Lead  
E: [lconley@wtpartnership.com.au](mailto:lconley@wtpartnership.com.au)