



Carbon & Sustainability

Capability Statement

JUNE 2025

Empowering
growth.



About WT

We empower our clients to grow, inspiring confidence through independent advice and inventive thinking to create sustainable value across all aspects of the built environment.

We are a leading international project advisory firm with more than 75 years of multi-sector experience.

Our clients can tap into the collective thinking of over 2,000 of the best people in the industry, operating from 70+ offices throughout Australia, New Zealand, Asia, India, Middle East, North America, Africa, the UK and Europe.

In Australia, we support our clients across property, construction and infrastructure with an award-winning team of 500 specialists in portfolio and program advisory, cost management and quantity surveying, commercial advisory, carbon and sustainability, asset and facilities management, and digital solutions.



Operating
since 1949



Independently
owned & operated



2,000+ staff
globally



500 staff in
Australia

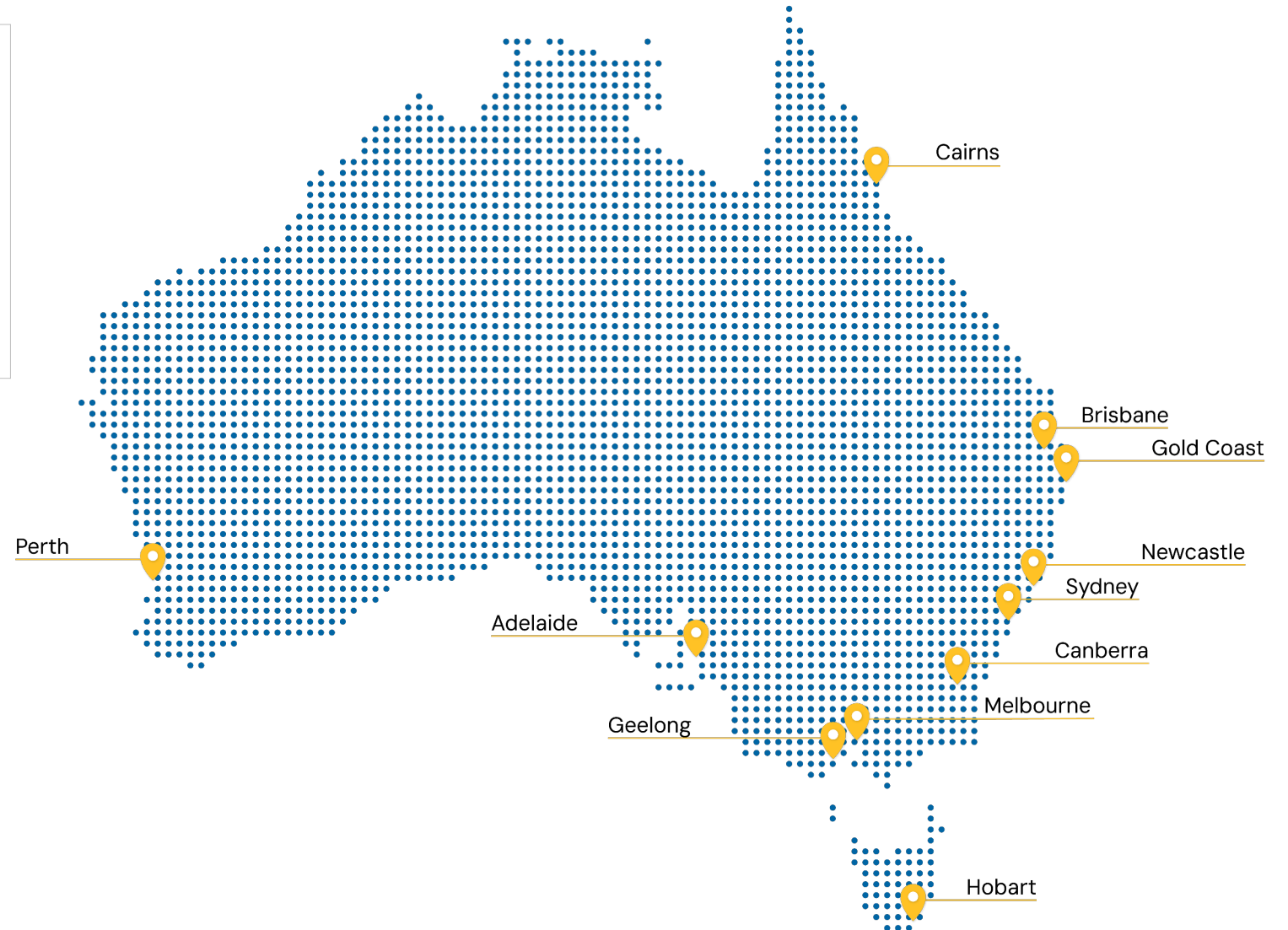
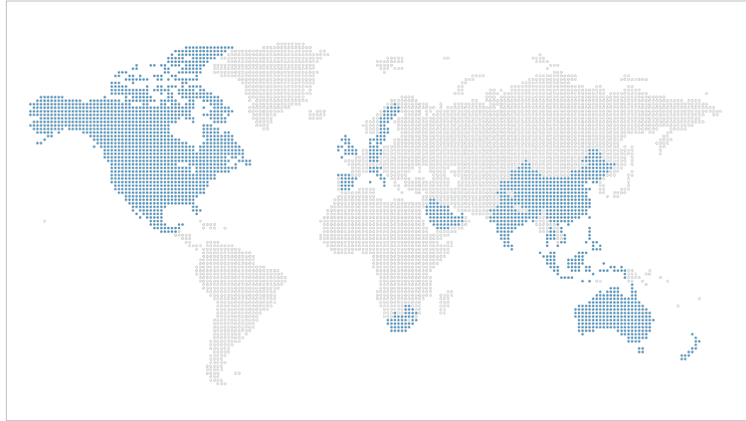


70+ offices
worldwide



12 offices
nationwide

Our global and national footprint



Sectors

We bring more than 75 years of multi-sector experience.

Aviation

Commercial & Workplace

Data Centres

Defence

Education

Energy



Healthcare

Hotels & Entertainment

Industrial & Logistics

Life Sciences

Mixed Use

Public & Civic



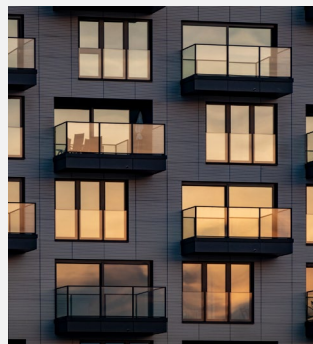
Residential

Retail

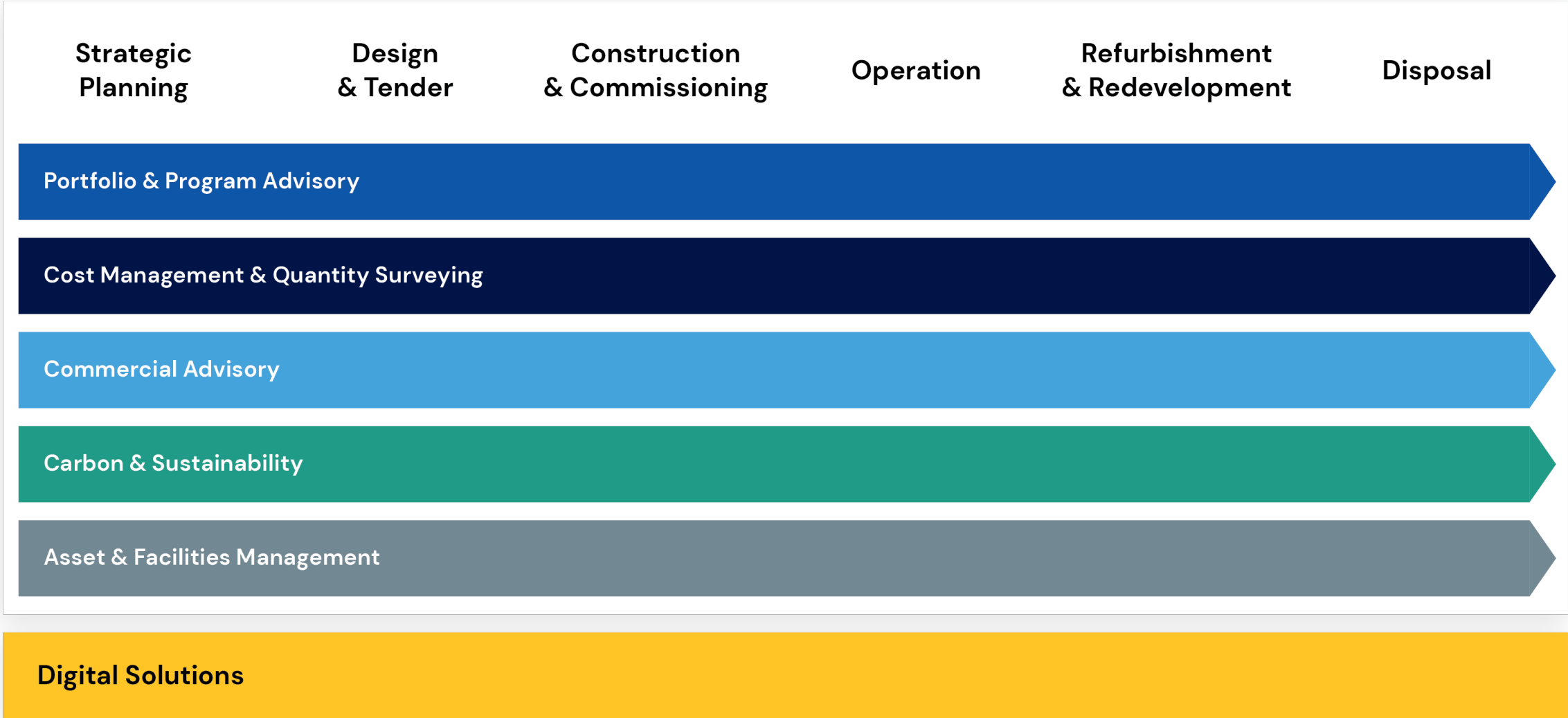
Sports & Venues

Transport

Water



Our services across the project lifecycle





Carbon & Sustainability

Today's buildings and infrastructure shape tomorrow's world. That's why we're making it easier for our clients to understand and achieve greener choices and sustainable value across the life of their projects.

With the building and construction sector responsible for a significant proportion of global carbon emissions, waste and energy consumption, we all have an opportunity – and a responsibility – to embrace change and build a more sustainable future.

Harnessing the power of new technologies and big data, we provide independent, reliable and realistic sustainability costing, measurement and advisory services.

Our digital solutions revolutionise how clients can access and interact with their project data. From managing and reporting embodied carbon to achieving green building certifications or futureproofing older assets to meet new expectations, we help our clients make faster and better decisions to achieve cost-effective structures that perform across their lifecycle.

Carbon & Sustainability



Electrification and sustainable buildings

Any asset can be updated, retrofitted and futureproofed to operate more sustainably. With a wealth of mechanical, electrical and plumbing (MEP) experience, we undertake audits and develop management plans to optimise energy and water use across the long life of a building.

With our deep knowledge of technical requirements, we help our clients navigate the transition of building services from gas to electricity with a clear understanding of the capital and whole-of-life cost impacts.

Our sustainability perspective encompasses more than energy and water. We also work with clients to minimise waste, create healthy spaces for work and living, boost biodiversity, and turn upfront costs into long-term value.



Embodied carbon management

Reducing embodied carbon is an urgent global challenge and crucial for achieving net zero. We leverage our wealth of current, real-world experience and the power of rich data and advanced technology to accurately estimate, measure, benchmark and report the embodied carbon status of our clients' assets.

We identify carbon hot spots and help our clients understand design implications, test decisions, and track progress using our online dashboards. With our expert eye on the rapid evolution of innovative low-carbon design options and materials, we can also recommend, quantify and provide cost options for improving a project's carbon footprint.

We have helped achieve significant embodied carbon reductions on previous and current projects, and continue to strive for further reductions wherever possible.



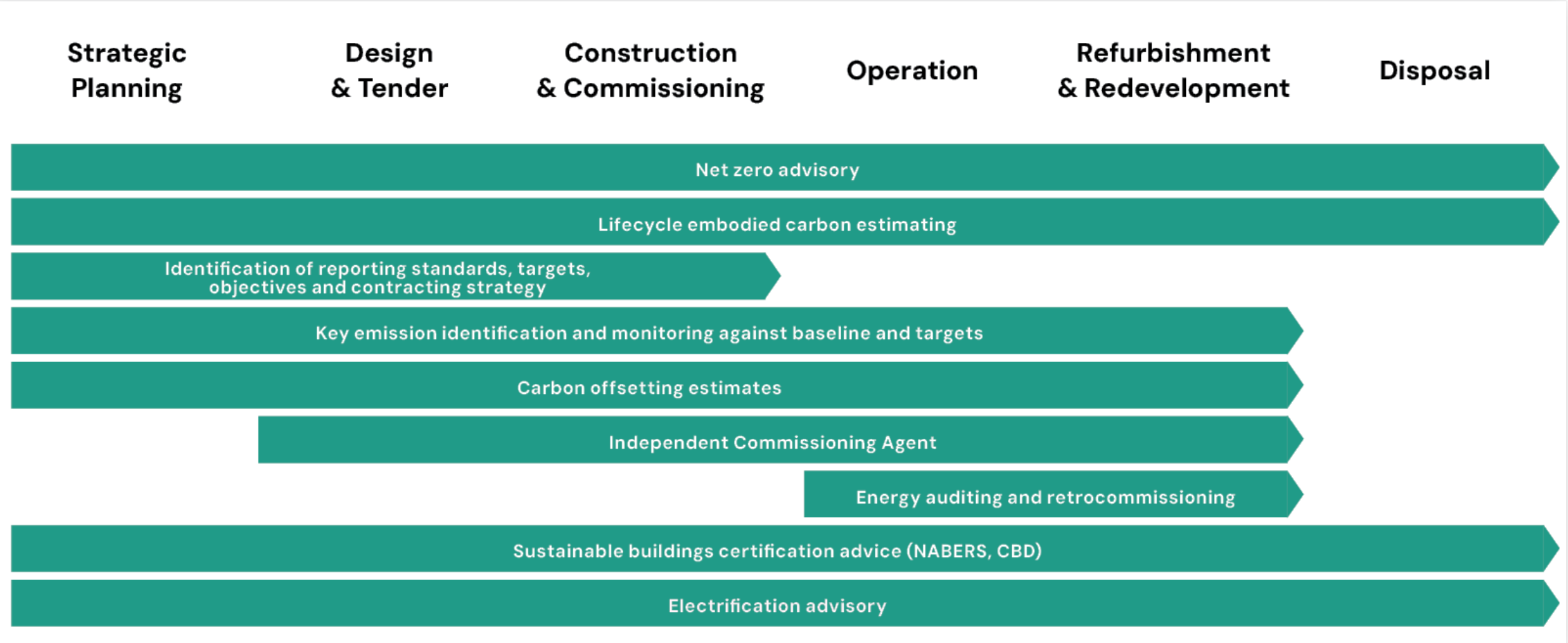
Green building commissioning and certifications

Whatever our clients' priorities and targets for their assets – whether it's pursuing accreditations (such as GBCA's Green Star, NABERS, or Climate Active), meeting corporate ESG targets or complying with government requirements – we help them understand the costs and benefits, and map the path to success.

With our support, our clients can get ahead of the curve with future-ready projects that will tick all the right boxes and appeal to eco-savvy investors, purchasers and tenants.

As an independent commissioning agent (ICA), we provide an unbiased perspective of the commissioning process and a 'soft landing' to protect our clients' interests. We'll bring our extensive knowledge and continuous support to ensure assets are delivered well and can live up to their full green potential.

Carbon & Sustainability





Experience

Empowering
growth.

International Towers Barangaroo

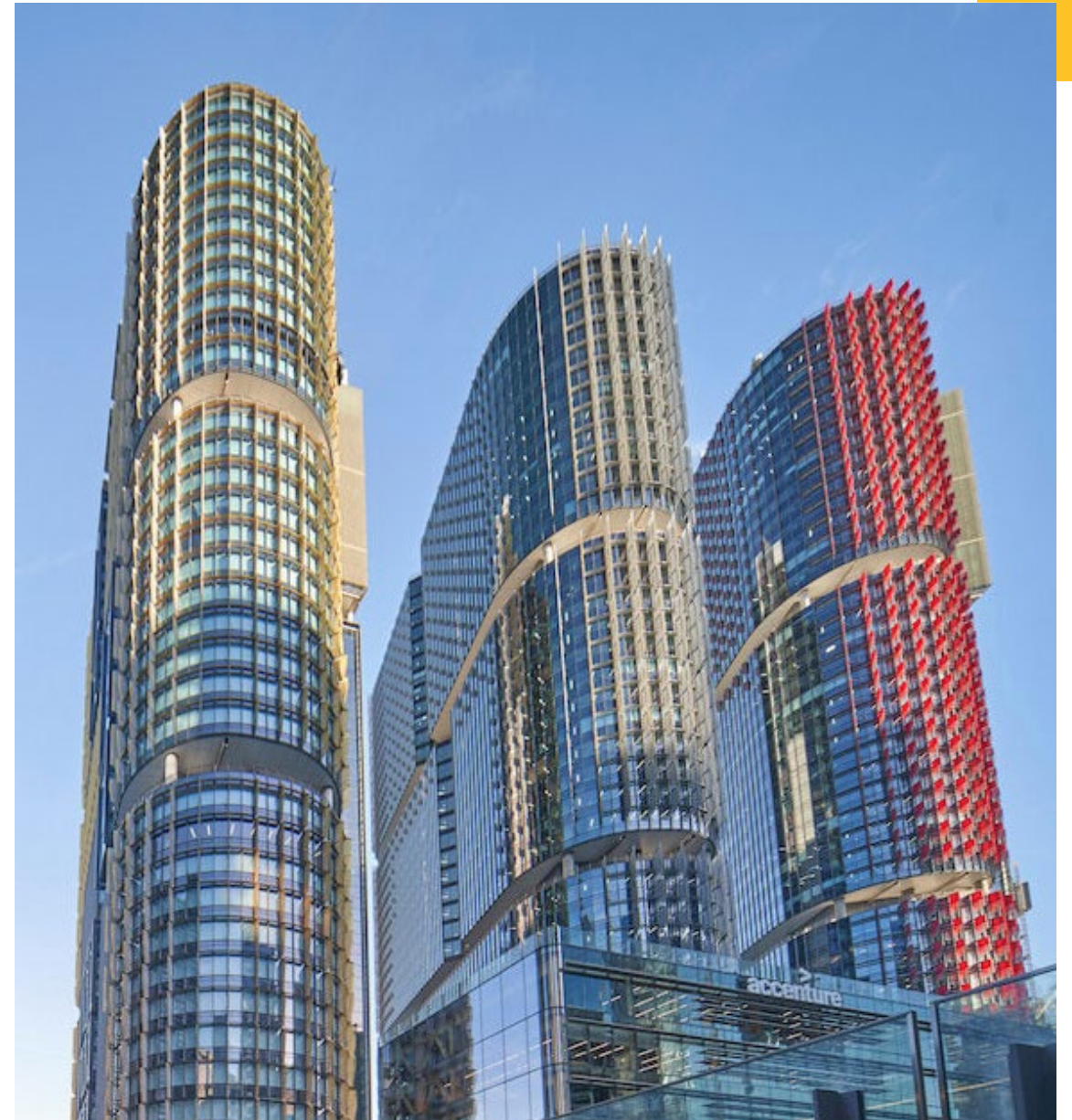
Mixed use

International Towers, in Sydney's Barangaroo precinct near the Harbour Bridge, is home to some of Australia's biggest companies. Lendlease, the managers of the three tall commercial towers, has placed a very high priority on sustainability, and the towers have achieved an impressive array of green certifications.

To further reduce the carbon footprint of the towers, Lendlease Investment Management commissioned design engineers NDY to investigate and propose technical solutions to change the towers' heating system from gas boilers to an electrical heating system.

With WT's specialist knowledge in mechanical, electrical and plumbing (MEP) cost estimation, we were brought on board to provide accurate capital cost estimates for the proposed technical solutions at the three towers and two smaller commercial buildings.

Learn more: [International Towers, Barangaroo | WT Australia \(wtpartnership.com.au\)](https://wtpartnership.com.au)



Atlassian Central

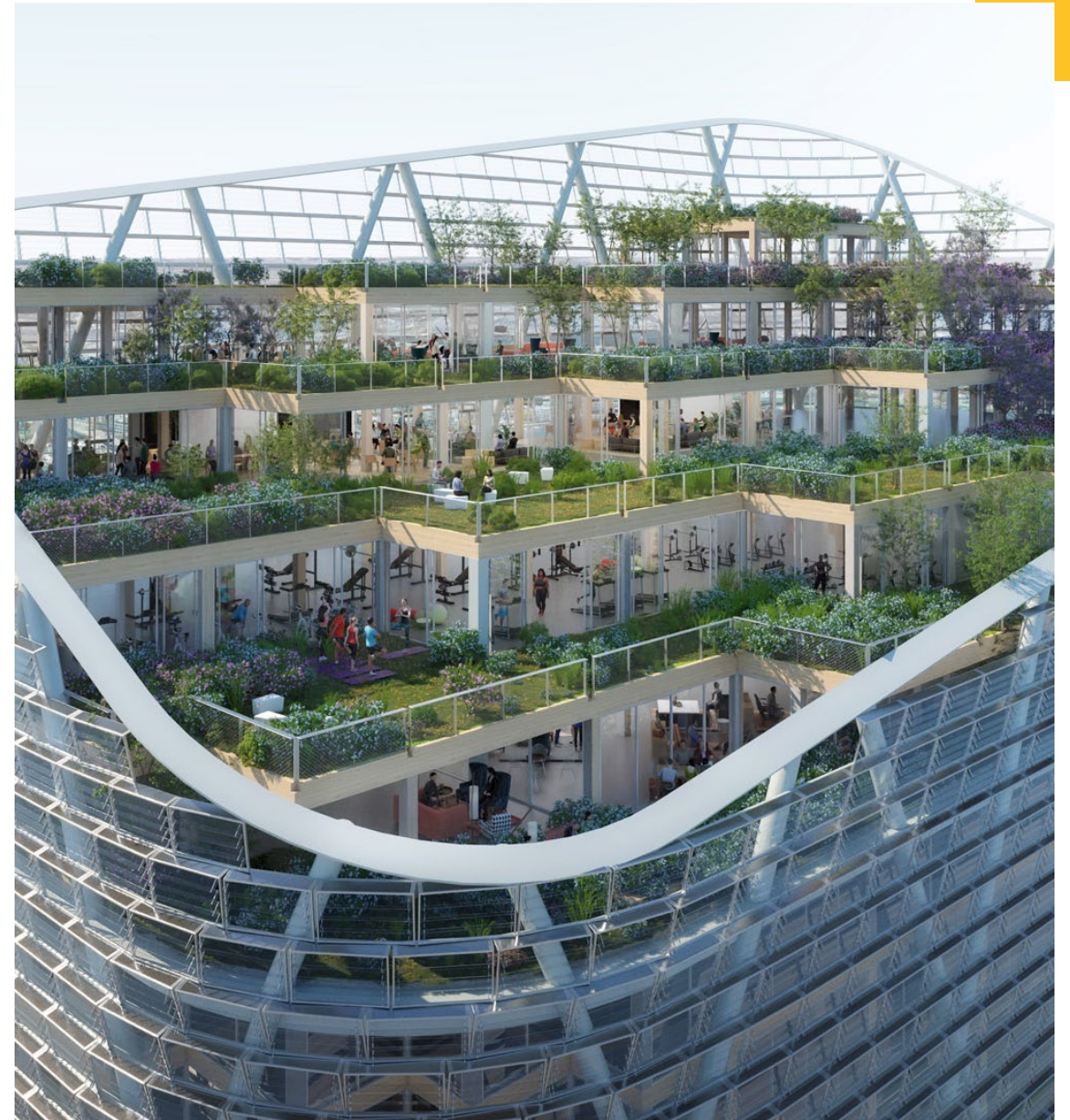
Mixed Use

Sydney's iconic inner-city suburbs will soon transform into Tech Central, an innovation district of leading tech firms and startups, educational institutions and NSW major projects. The state government-backed precinct is part of the country's largest urban renewal program with an ambitious vision to change the world through new thinking, creativity and technology.

Atlassian Central is a game-changer for low-carbon construction and is working towards ambitious sustainability targets including 50% reduction in embodied carbon during construction, 5.5 star NABERS Energy Commitment and using 100% renewable energy from day one of operation.

Since 2020, WT has been working closely with our client Dexus and project manager firm Generate Property Group to establish development budgets, assist with embodied carbon modelling during the pre-contract phase, provide cost advice and identify value engineering opportunities throughout the project's delivery phase.

Learn more: [Atlassian Central - WT Australia](#)



Electric truck charging infrastructure

Industrial & Logistics

Electric vehicles will play a crucial role in decarbonising the transport sector and supporting Australia's quest for a lower-emissions future and healthier, more liveable, and more sustainable cities.

Team Global Express is rolling out a logistics fleet of 60 new electric trucks, Australia's largest trial of electric logistics vehicles. In the 5-year trial, these cleaner, quieter electric trucks will deliver parcels in and around Sydney. This project received funding from the Australian Renewable Energy Agency (ARENA) as part of the Driving the Nation Fund.

WT was able to leverage the skillsets and knowledge of our dedicated mechanical, electrical and plumbing (MEP) team to understand and provide accurate advice on the project's complex electrical systems and evolving technologies. We added value by engaging our in-house qualified electricians to oversee the cost assessment and reporting. This ensured that costs claimed during construction were confirmed to be reasonable.

Learn more: [Electric truck charging infrastructure - WT Australia](#)



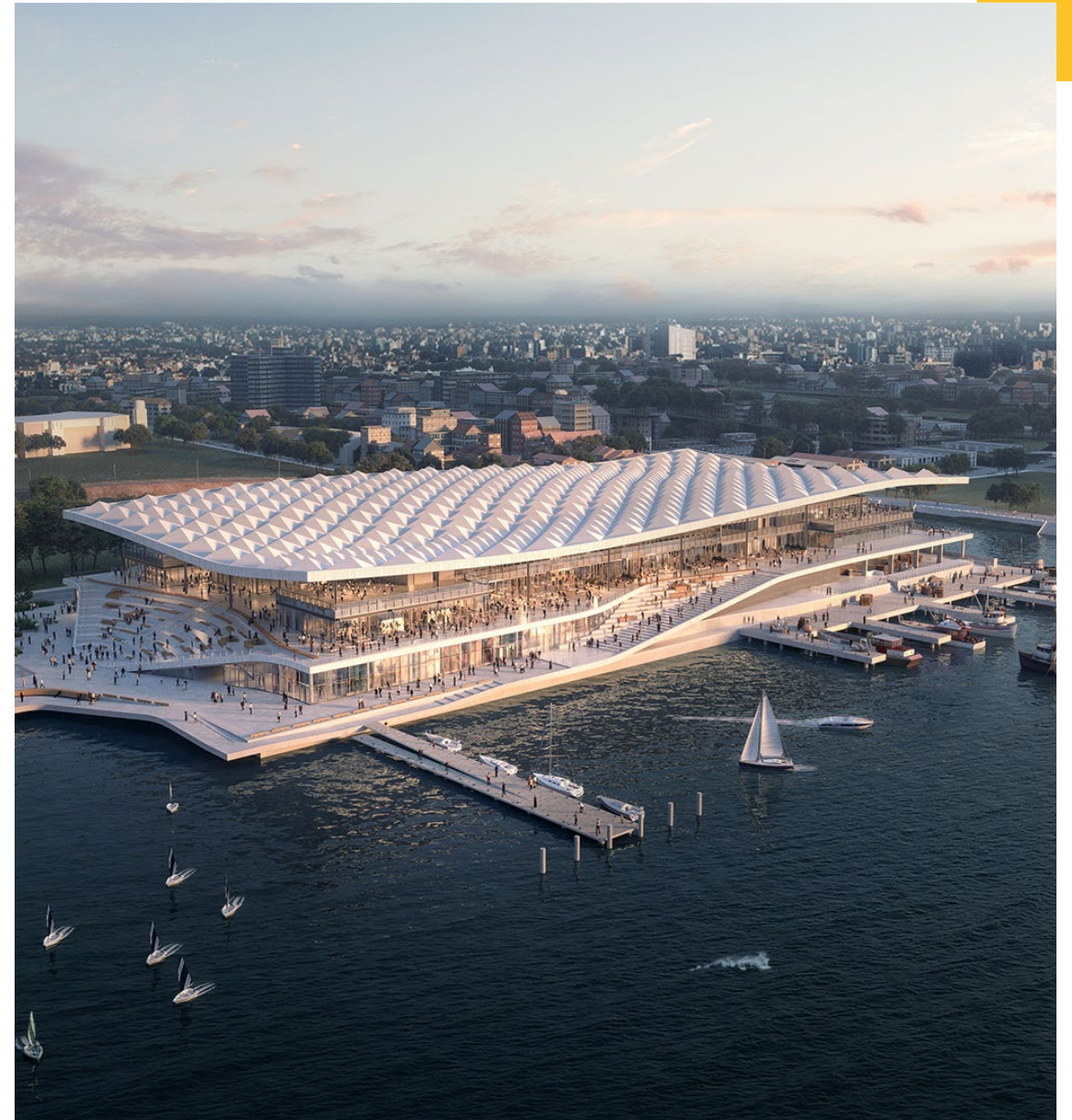
Sydney Fish Market Redevelopment

Retail

The iconic Sydney Fish Market is being reimagined with sustainable design, construction and operation at the forefront. As Australia's home of seafood, the NSW Government has injected \$750 million of support to boost the tourism and fishing industry. By revitalising Sydney Fish Market's seafood operations, distribution, retail, dining and public space, visitation is expected to double to over 6 million people per year on completion.

Infrastructure NSW engaged Multiplex as the main works contractor and construction began in 2021. WT was brought on board as both the Independent Certifier and Independent Commissioning Agent to work closely with Multiplex, subcontractors and stakeholders to ensure the delivery of world-class building services and facilities.

Learn more: [Sydney Fish Market Redevelopment - WT Australia](#)



Gurrowa Place Tower 3 Student Accommodation

Residential

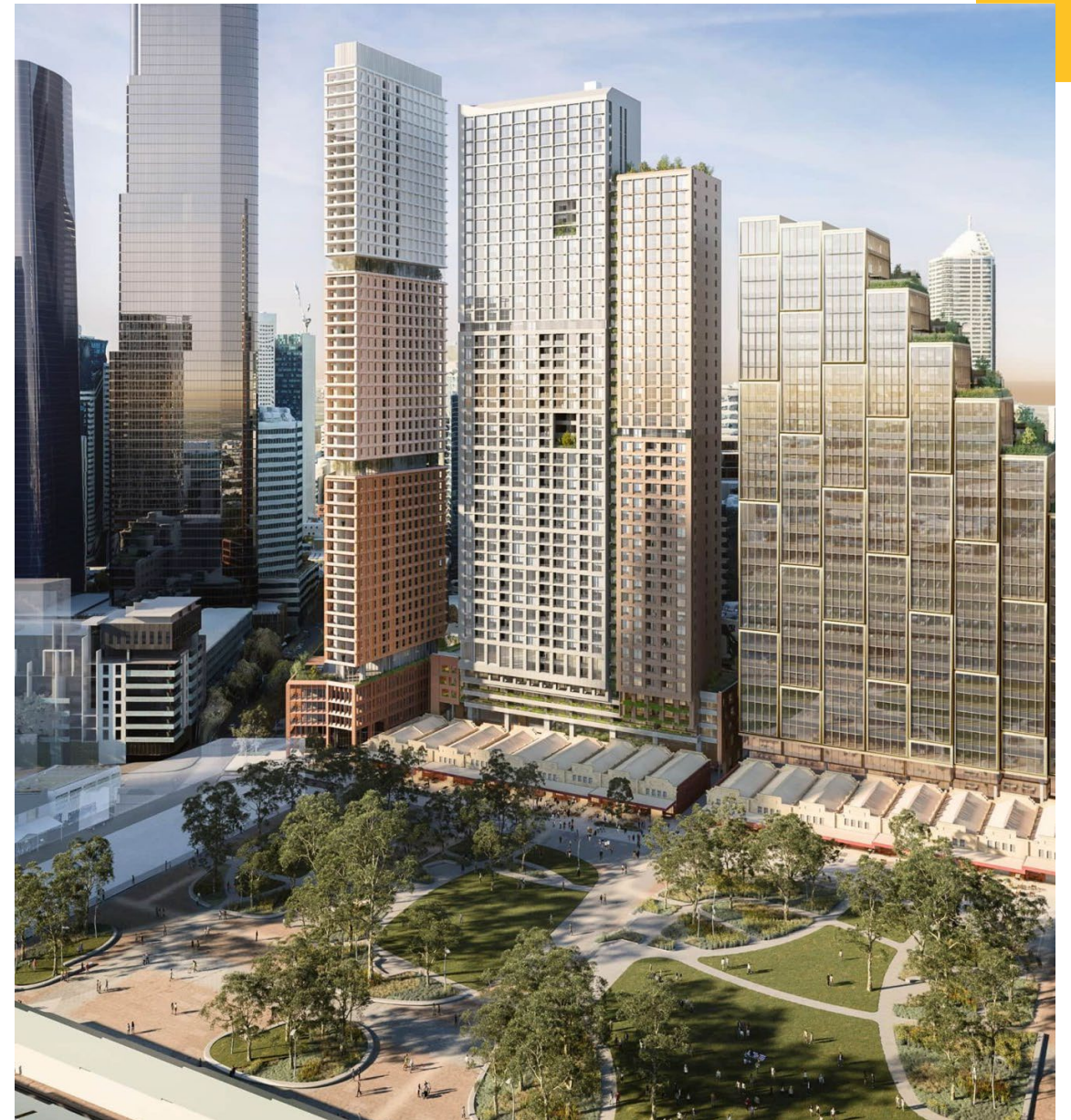
Run by student accommodation provider Scape, Gurrowa Place Tower 3 will provide up to 1,100 much-needed beds for students at Victorian universities and colleges.

The future-focused project has high sustainability aspirations targeting the most recent 5-Star Greenstar certification requirements.

Having previously worked on several student accommodation projects with Scape, WT was engaged to provide cost management and advisory services for Gurrowa Place Tower 3.

This included providing cost estimates from initial conceptual design to pre-tender stage and collaborating with consultants to develop high-quality, sustainable design solutions. We also prepared the bills of quantities and supported Scape throughout the tender evaluation process.

Learn more: [Gurrowa Place Tower 3 student accommodation - WT Australia](#)





Contacts

Carbon management

Imogen Lyons, Associate Director
E: ilyons@wtpartnership.com.au

Kirsten Gilbert, Associate
E: kgilbert@wtpartnership.com.au

Electrification and sustainable buildings

David Quincey, Director – Engineering Services
E: dquincey@wtpartnership.com.au

Firas Omair, Associate
E: fomair@wtpartnership.com.au

Green building commissioning and certifications

Nic Mills, State Director
E: nmills@wtpartnership.com.au

Sustainability advisory

Steve Hennessy, Sustainability Lead
E: shennessy@wtpartnership.com.au