



Commercial Advisory

Capability Statement

JUNE 2025

Empowering
growth.



About WT

We empower our clients to grow, inspiring confidence through independent advice and inventive thinking to create sustainable value across all aspects of the built environment.

We are a leading international project advisory firm with more than 75 years of multi-sector experience.

Our clients can tap into the collective thinking of over 2,000 of the best people in the industry, operating from 70+ offices throughout Australia, New Zealand, Asia, India, Middle East, North America, Africa, the UK and Europe.

In Australia, we support our clients across property, construction and infrastructure with an award-winning team of 500 specialists in portfolio and program advisory, cost management and quantity surveying, commercial advisory, carbon and sustainability, asset and facilities management, and digital solutions.



Operating
since 1949



Independently
owned & operated



2,000+ staff
globally



500 staff in
Australia

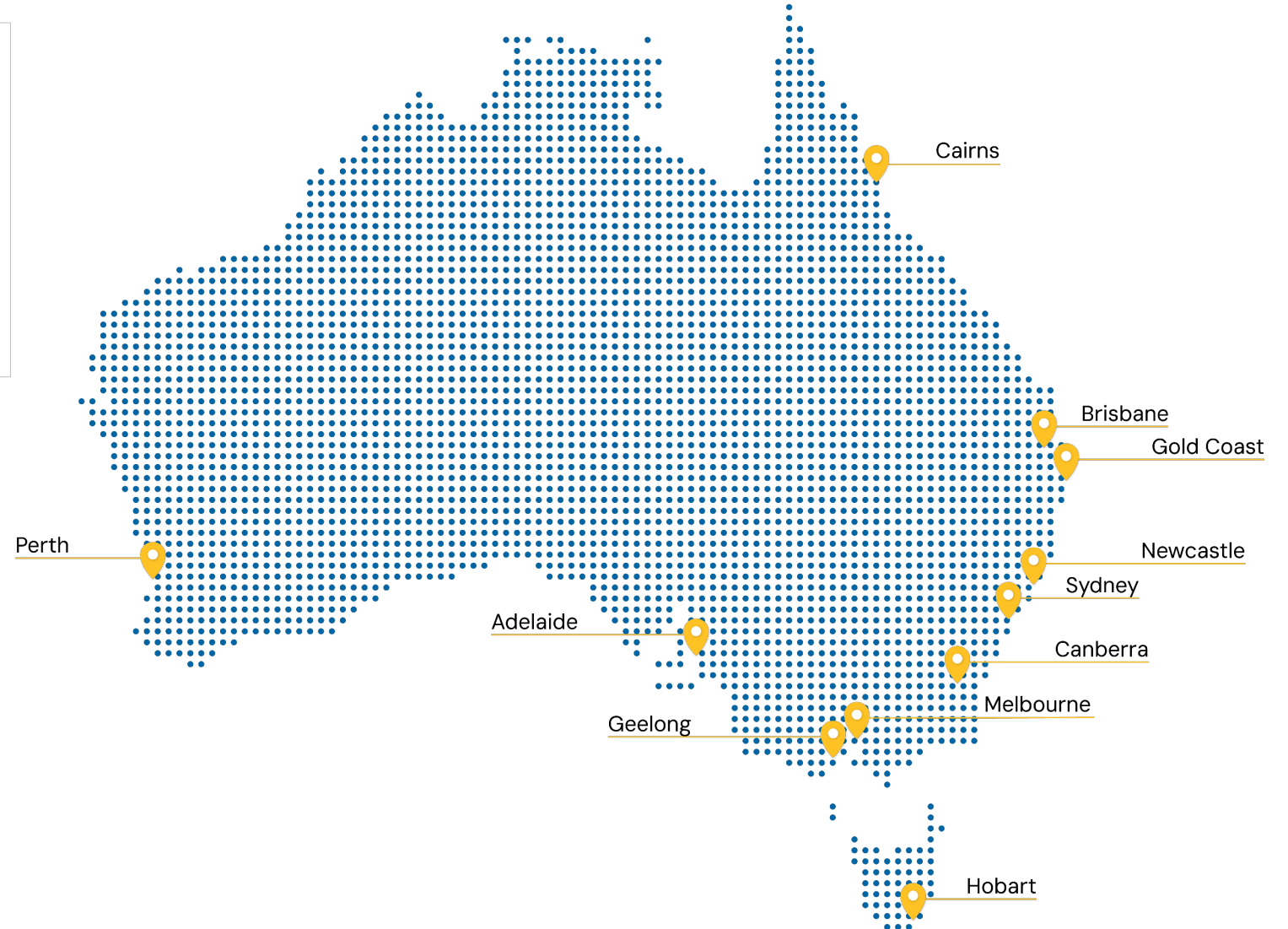


70+ offices
worldwide



12 offices
nationwide

Our global and national footprint



Sectors

We bring more than 75 years of multi-sector experience.

Aviation

Commercial & Workplace

Data Centres

Defence

Education

Energy

Healthcare

Hotels & Entertainment

Industrial & Logistics

Life Sciences

Mixed Use

Public & Civic

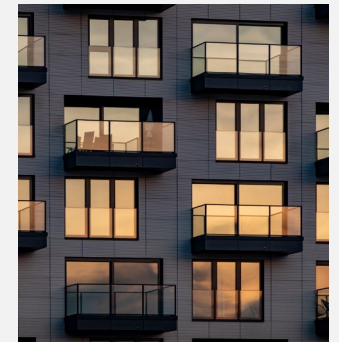
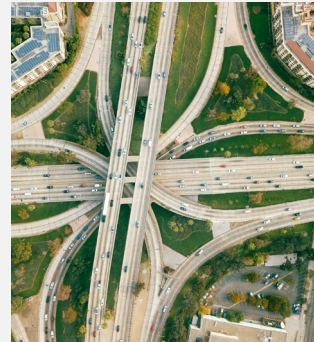
Residential

Retail

Sports & Venues

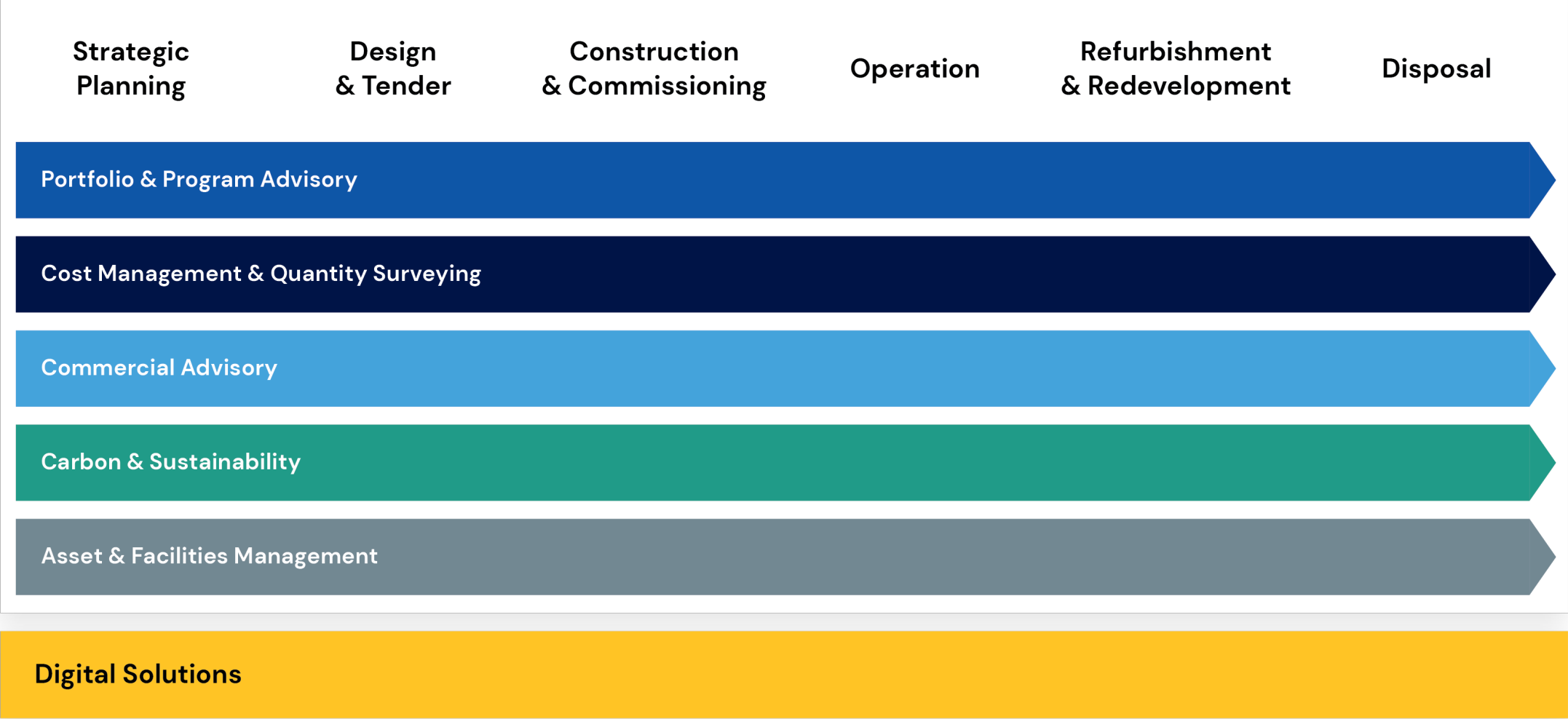
Transport

Water



Services

Delivering services across the project lifecycle.





Commercial Advisory

Commercial success is more than a set of numbers. With an independent view of risks, opportunities and progress, we empower our clients to achieve sustainable long-term value and navigate fair solutions.

Whatever the shape of a project or program – from the biggest public-private partnerships to bespoke commercial developments – we help our clients achieve their commercial goals, empowered by the best information, inventive thinking and strategic advice.

Our independence, objectivity and market-leading expertise help safeguard our clients' commercial success, from feasibility and bids through to construction, operations and disposal.

Commercial advisory



Driving commercial success

With us, our clients can be confident of their commercial outcomes – whether we're engaged to support project or program structuring and transaction management, construction, operational commencement, or to act as Lender's Technical Advisor, Independent Reviewer and Financier's Certifier.

No matter the size or type of engagement, we make it our priority to understand all parties' needs and aspirations. We know that when many stakeholders are involved, the potential for miscommunication or misunderstandings increases. This is why third-party objectivity is so important – and why our clients value the absolute impartiality of our advice, assessment, review and certification.



Independent commissioning

From project design through to building occupation, our independent commissioning management expertise helps our clients achieve the best possible environmental and energy performance in their new or existing buildings, going beyond 'ticking the boxes' to unlock sustainable value.

As an Independent Commissioning Agent (ICA), we provide an unbiased perspective of the commissioning process and a 'soft landing' to protect our clients' interests. We'll bring our extensive knowledge and continuous support to ensure assets live up to their full potential to attract savvy investors, purchasers and tenants.



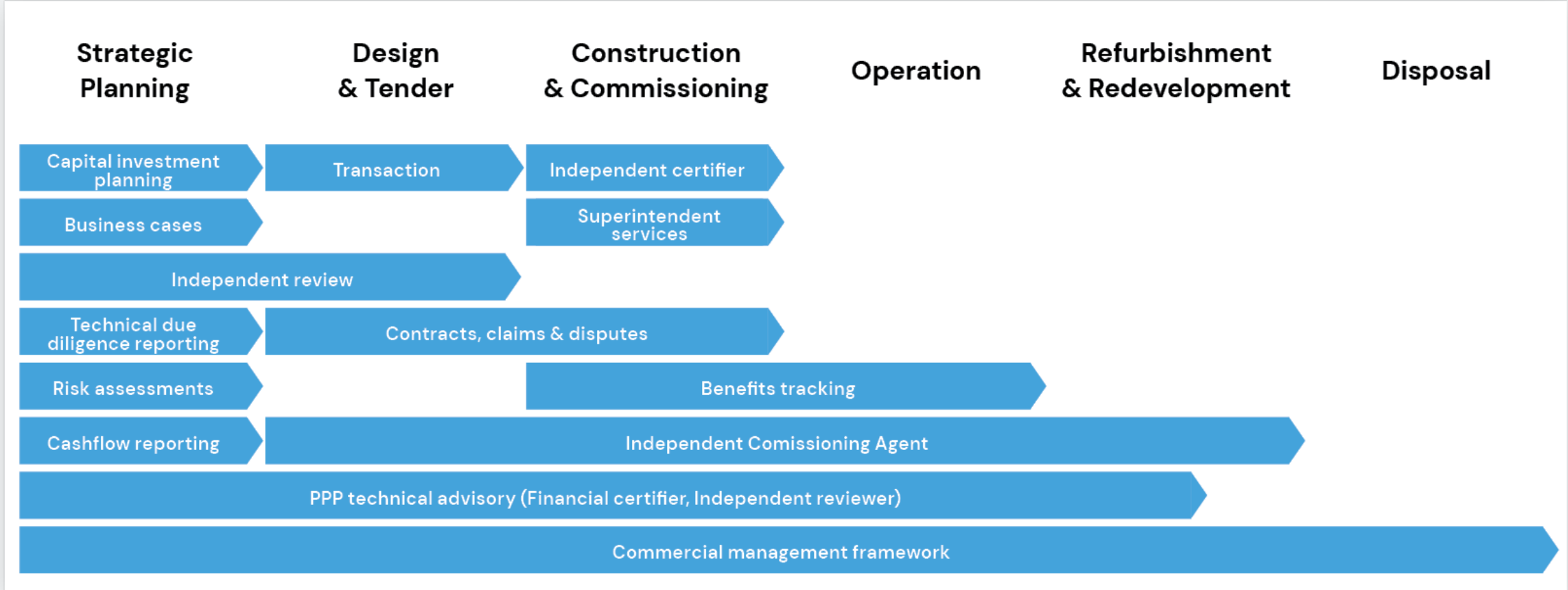
Contracts, claims and disputes

Construction disputes can be time-consuming and costly. As experienced, independent construction cost and program professionals, we can support clients to develop their strategies as well as providing expert quantum and delay services during legal proceedings. Understanding the pressures faced by all parties, we work closely with clients and their legal teams to deliver timely and cost-effective resolutions.

When legal proceedings require expert witnesses, we can provide impartial reports, cost advice, and clear, authoritative expert testimony to meet the demands and deadlines of live projects and ongoing disputes.

We maintain a strong reputation and deliver positive outcomes through close collaboration, expert knowledge, timely action, and the highest standards of professional practice and confidentiality.

Commercial Advisory



Digital Solutions



Experience

Empowering
growth.

Woree Social and Affordable Housing Precinct

Residential

At a disused former drive-in cinema south of Cairns, a new master-planned development is set to create 490 new social, affordable and specialist disability homes for independent seniors and people living with disability and deliver lasting social benefits in the region. It will be Queensland's largest social and affordable housing precinct, Cairns' largest-ever apartment development, and a major contribution to easing the crisis in housing supply and affordability.

The managed-housing project is designed to help seniors downsize from larger homes – freeing up under-utilised social housing for families in need – while enjoying the benefits of social connection, lifestyle programs and support services. The low-maintenance, energy-efficient 1- and 2-bedroom homes will be developed across 16 buildings in clusters of 4, in a pleasantly landscaped setting including facilities for recreation and socialising and with easy access to public transport.

WT has been involved with this landmark housing project since its very early stages, beginning with our Cairns QS team providing a cost estimation report. WT has provided lender's technical advisory services through to contract close, and our team are engaged as Financier's Certifier for the duration of the project.

Learn more: [Woree Social and Affordable Housing Precinct - WT Australia](#)



Metro Tunnel Project

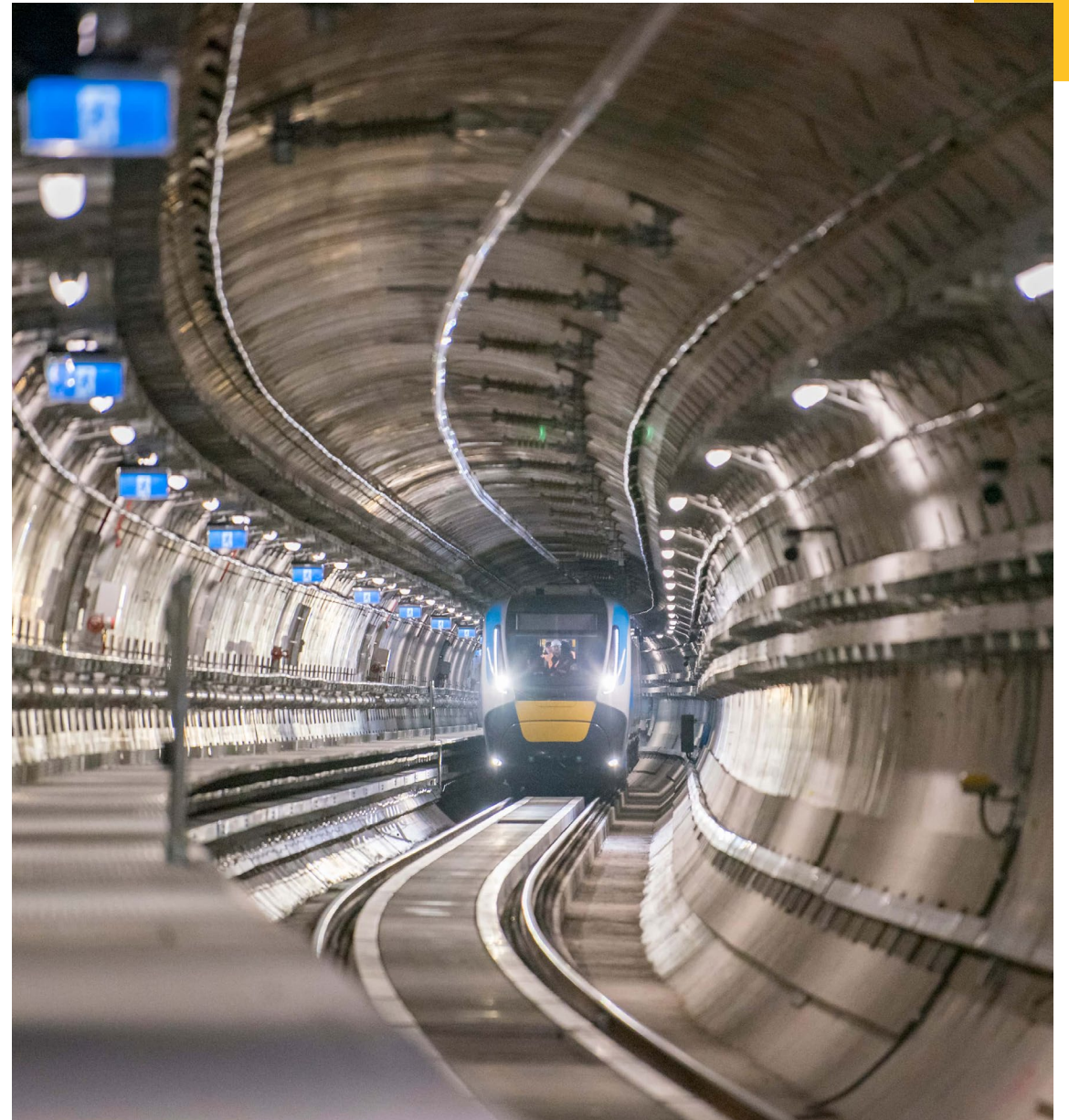
Transport

The MMTS PPP entails the design, construction, operation and financing of a twin nine-kilometre rail tunnel, five new underground stations and a range of systems required to support the effective operation of the new tunnel and stations, delivered as an availability-based PPP. The project is one of the largest transport infrastructure projects ever undertaken in Australia in response to strong and increasing demand for public transport.

As such the risk analysis and management was a critical part of the services provided on this project, including site utilities and related infrastructures. Given the size and complexity of the project the use of probabilistic modelling is critical to contingency.

The State of Victoria will separately procure a number of other work packages required to fully deliver the wider network capacity and performance benefits of MMTS. The interdependencies on a number of other projects creates a significant emphasis for interface management for the project.

Learn more: [Metro Tunnel Project - WT Australia](#)



Digital innovation revolutionises contractual dispute analysis

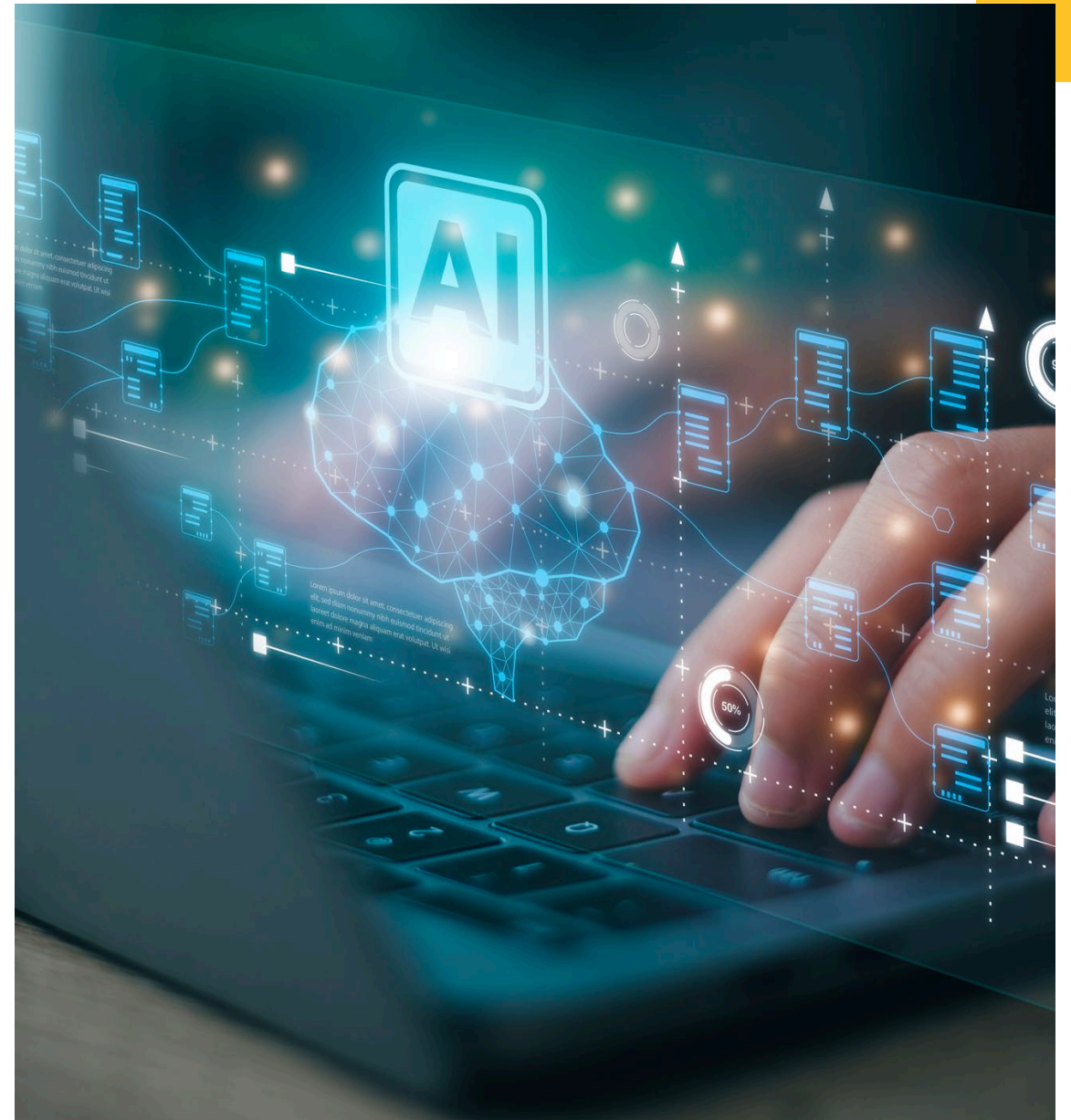
Digital Solutions

Time is crucial in contractual disputes, but manually reviewing thousands of documents is a massive and lengthy task. For a recent construction project, our dispute team needed to quickly and accurately assess tens of thousands of documents including invoices, dockets, receipts, and other complex financial, contractual and operational documentation. The traditional approach in high-volume scenarios is manually spot-checking a sample and extrapolating conclusions. However, such approaches risk overlooking essential details and nuances that may be critical to the dispute resolution process.

To achieve a comprehensive and accurate analysis that would also be rapid and cost-effective, we knew we'd need more than human power, so we looked towards emerging digital technologies.

Our data science team stepped in to develop a model capable of meticulously reviewing and categorising information from the diverse range of documents, in a manner that would assist the issues in dispute.

Learn more: [Digital innovation revolutionises contractual dispute analysis - WT Australia](#)



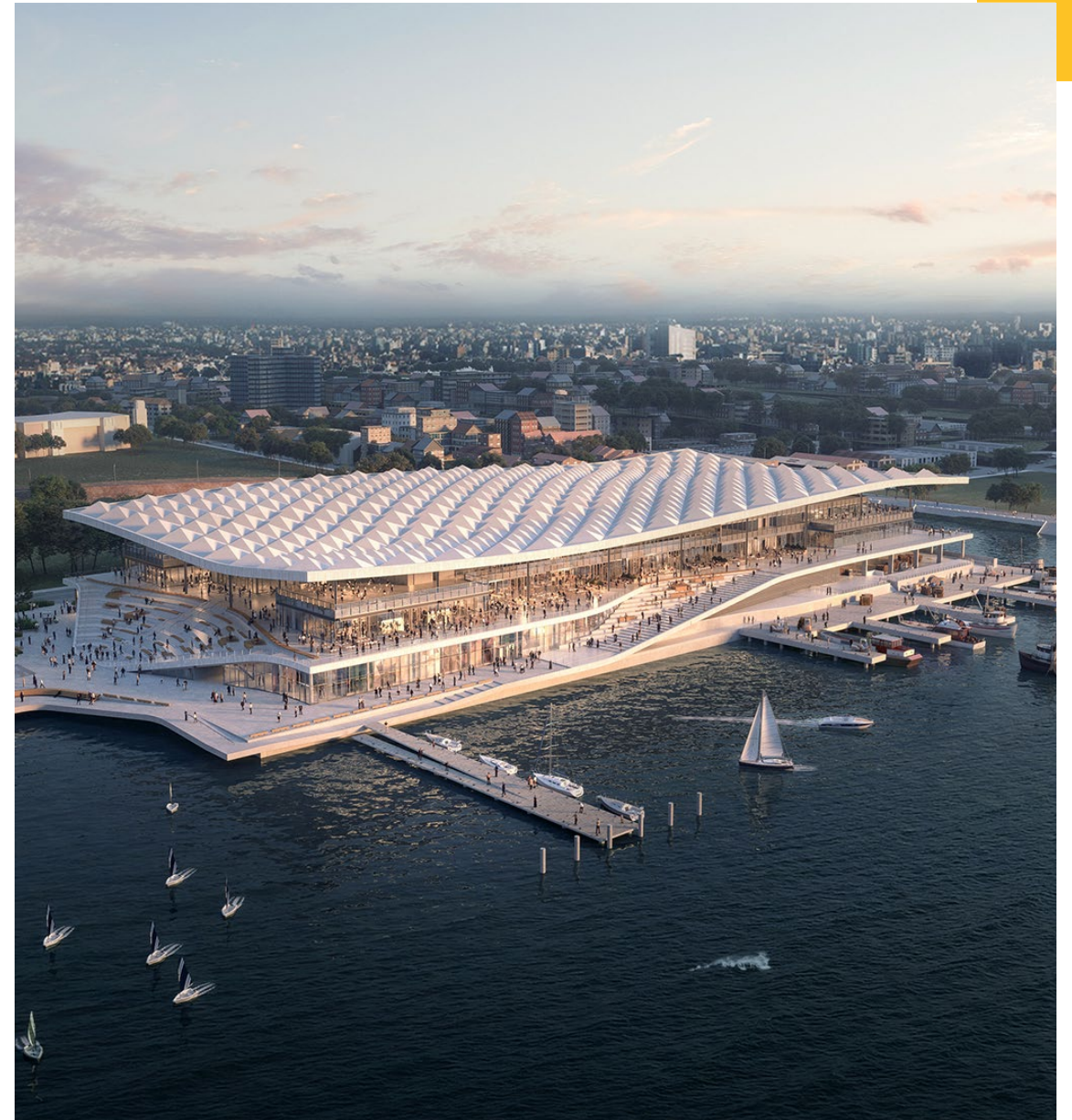
Sydney Fish Market Redevelopment

Retail

The iconic Sydney Fish Market is being reimagined with sustainable design, construction and operation at the forefront. As Australia's home of seafood, the NSW Government has injected \$750 million of support to boost the tourism and fishing industry. By revitalising Sydney Fish Market's seafood operations, distribution, retail, dining and public space, visitation is expected to double to over 6 million people per year on completion.

Infrastructure NSW engaged Multiplex as the main works contractor and construction began in 2021. WT was brought on board as both the Independent Certifier and Independent Commissioning Agent to work closely with Multiplex, subcontractors and stakeholders to ensure the delivery of world-class building services and facilities.

Learn more: [Sydney Fish Market Redevelopment - WT Australia](#)



Ground Lease Model Project

Residential

WT and Building Communities are breaking new ground – working closely with Homes Victoria to tackle housing affordability through an innovative and collaborative partnership, known as the Ground Lease Model (GLM).

Housing is fundamental to every Australian's health, wellbeing, security and sense of community. In a first of its kind in Victoria, GLM successfully renewed ageing social housing sites by replacing older style dwellings with social homes that are modern, energy efficient and designed to suit diverse needs of residents.

Through GLM, Homes Victoria leased the public land to a not-for-profit project group to finance, design, construct and operate rental housing for 40 years. At the end of the lease term, all land and buildings will be returned to Homes Victoria – meaning no sale of public land.

WT worked with the Building Communities (consisting of Tetris Capital, Icon Constructions, Community Housing (Vic) Limited, Abrdn and Invesis) to provide PPP technical advisory services, including expert lenders technical advisory and financiers certification for the GLM1 project. On completion in early 2024, residents have settled into the 1,084 new homes across Flemington, Brighton and Prahran.

Learn more: [Ground Lease Model Project - WT Australia](#)





Contacts

Sian Mckenna

National Director, VIC

E: smckenna@wtpartnership.com.au

Adam Adkin

State Director, QLD

E: aadkin@wtpartnership.com.au

Tim Bessell

National Director, VIC

E: tbessell@wtpartnership.com.au

Adam Robinson

Head of Portfolio & Program Advisory

E: arobinson@wtpartnership.com.au

Nic Mills

Green Building Commissioning and
Certifications Lead

E: nmills@wtpartnership.com.au

Stephen Bolt

Contracts Claims & Disputes
Services Lead

E: sbolt@wtpartnership.com.au